

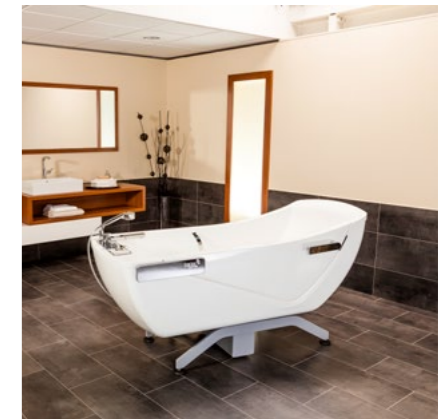


AVERO Motion

Unique Height adjustable Reclining bath



Watch product video!



Create a unique bathing experience for your residents.

Promote mobility and independence of your residents with the designer care bathtub AVERO Motion. The low entry height guarantees a safe entry. Thanks to the large opening on the side of the tub, it is possible for (partially) mobile residents to independently enter the tub. Especially mobile residents enjoy the possibility of an independent full bath. Soft shapes, a large amount of space and the ergonomic tub body guarantee a comfortable bathing experience for your residents.

Group 1 Group 2 Group 3 Group 4*

* only in combination with a transfer hoist



Large foot area with a pre-filling volume of 98 liters



Panel with temperature display for hand shower, bathing water and bath spout



Large space in the tub body



Sitting position of the tub is ideal for showering your residents



Allows a clear view of the room without a bulky control panel



Special back profile prevents slipping in the tub body



Ergonomic handles provide bathers with optimal support and safety



No edges in the door area for unimpeded transfer with the wheelchair



Freely accessible base frame suitable for all modern patient lifts



Elegant design with tilt function

Soft shapes characterize the appearance of the AVERO Motion. In the sitting position, the tub can be used to shower residents without any problems. The tilt function gently brings residents into the bathing position. Particularly practical: thanks to the large pre-filling volume of 98 l in the foot area of the tub, the residents immediately lie in the warm bath water when the tub tilts back!



High bathing comfort for every type of resident

The AVERO Motion offers enough space for tall and heavy residents allowing for a pleasant bathing experience regardless of body size and weight.



Simple, safe self-entry possible

The large side opening door of the AVERO Motion enables residents to enter into the bathtub independently. This promotes mobility and gives partially mobile residents a dignified feeling of independence. The low entry height is also ideal for wheelchair transfers.



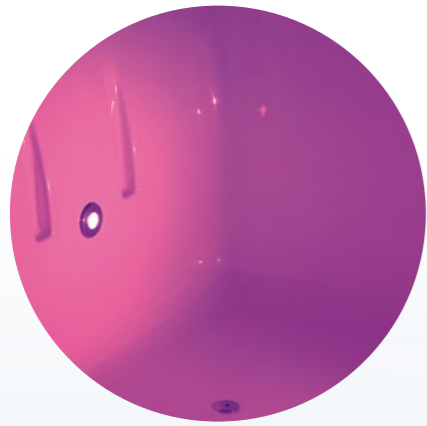
Freely accessible base frame

The AVERO Motion can be freely accessed with all modern bath and patient lifts.



Promote the sensitive perception and relaxation of your residents!

With our exclusive wellness options.



Colored-light system

The colored-light system creates a relaxing and optically stimulating atmosphere for the well being of your resident. It is equipped with a free choice of colors as well as with an automatic sequence program for color changing.

Air-Relax system

The Air-Relax system offers a pleasant and stimulating effect. The pleasing sensation on the skin provides for relaxation and tranquillization, especially for agitated patients while stimulating the perfusion of the skin. The jets are specially protected to prevent bacterial contamination eliminating the need for an internal disinfection device.



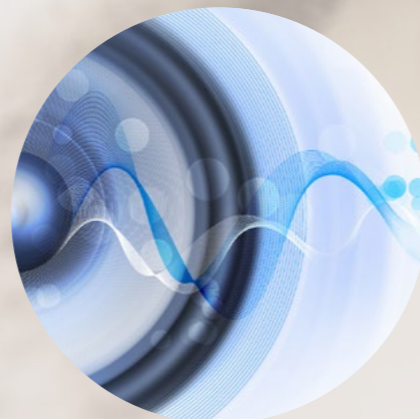
Aroma system

The integrated Aroma system allows the application of various scents, that together with the warm air from the Air-Relax system and the bathing water, offer a wonderful experience for the senses of your resident. The system is easy to operate and maintenance-free. This option is only available in combination with the Air-Relax system.



Music-sound system

While bathing, the residents can enjoy a relaxing and stimulating sound experience with the optional music sound system. Connect your device via Bluetooth or USB, and provide your individual music selection.



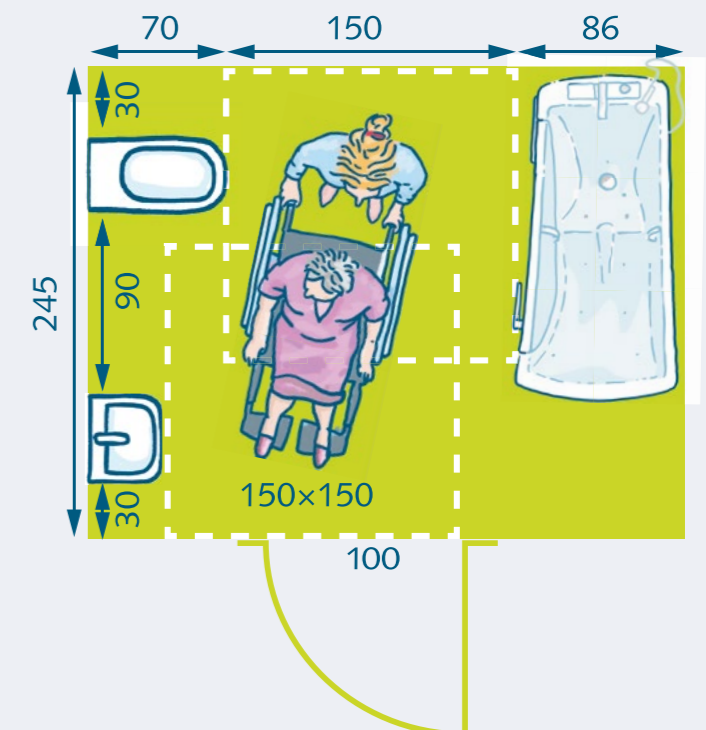
"AVERO Motion enables us to work more efficiently! „

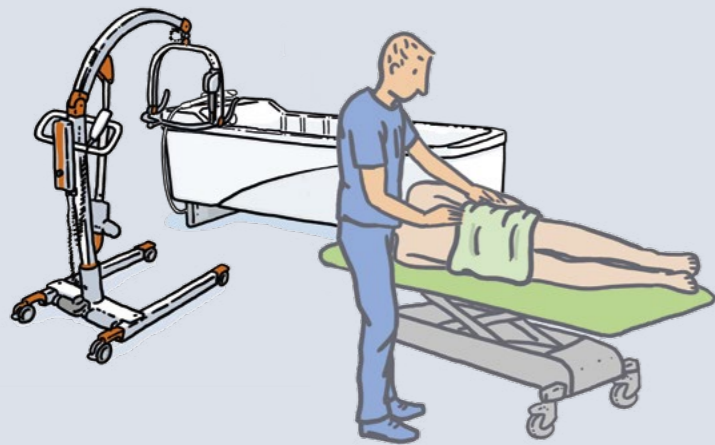


- ✓ Fast water filling and draining times minimize the total time required for a bath cycle
- ✓ Automatic water stop option enables the tub to be filled without supervision
- ✓ The intuitive control panel promises easy handling of the care bathtub
- ✓ Temperature display for bath spout, hand shower and bath water are always visible to the caregiver
- ✓ Residents of mobility groups 1-4 can be bathed in the care tub without any problems

Space requirements for AVERO Motion using an example Planning proposal.

The AVERO Motion can be set up anywhere in the room. Viewing direction can be changed, giving the occupant an unobstructed view into the room without any problems.





A strong team.

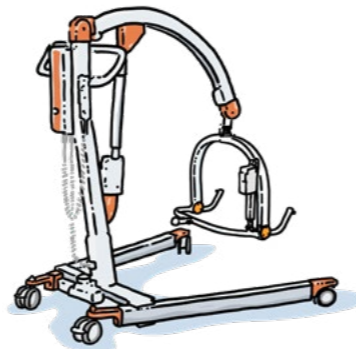
Complete solutions from BEKA Hospitec

Our products are perfectly tailored to each other. Use the AVERO Motion with our Mobility aids to create the best possible working base for your care!

The batteries and chargers of all mobility aids are compatible with each other!

Mobile hoist CARLO

- › With smart mechanisms for easy and ergonomic transport of residents
- › Models for bariatric residents available
- › Light construction, easily maneuverable



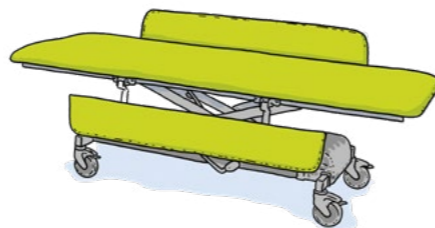
Flexible stand-up aid NORA

- › Effective relief for caregiver
- › Active lifters promote mobility of your residents
- › Suitable for people of all sizes thanks to additional belt attachment points (NORA Alu)



Care- and treatment table MONA

- › Mobile care- and treatment table
- › Comfortable padding
- › Stepless, vertical height adjustment













Technical Data

Tub length (entry position / lying position)	1.760 mm / 1.908 mm
Tub width (outside)	860 mm
Lowest entry height	490 mm
Angle of inclination	23°
Tub emptying (liters / min.)	75 l/min
Power connection	230 V, 50 Hz (120 V, 60 Hz)
SWL	350 kg
Pre-filling volume (foot area)	98 l

Product Information




Electrical Height Adjustment and Tub Tilting Function
Operation Panel with temperature display for hand shower, bathing water and bath spout
Molded seat with a special back profile to prevent slipping when bathing
Double scalding protection with sensor technology
Ergonomic handles for optimal grip
Seat with hygiene opening
Low entry height of 49 cm

Available Options

- | | |
|--|---|
|  Aroma system |  RAL colors available |
|  Colored-light system |  Disinfection system |
|  Air-Relax system |  Automatic tub filling |
|  Music-sound system |  Emergency function in case of power failure |
|  Bluetooth-music-sound system |  Hand control |

BEKA Hospitec GmbH
Am Rübenmorgen 3
35582 Wetzlar-Dutenhofen
info@beka-hospitec.de



 Tel +49 641 922 20-0
 Fax +49 641 922 20-20
 www.beka-hospitec.com